

## First Release

Year: LX.

Zagreb, 10 November 2023

POD-2023-3-1

ISSN 1334-0557



# BASIC INDICATORS OF BUSINESS DEMOGRAPHY, 2022 – Provisional Data

Enterprises monitored by business demography statistics are classified in the sections B to S of the National Classification of Activities – NKD 2007 with the exception of section O – Public administration and defence; compulsory social security and division S94 – Activities of membership organisations.

According to the provisional results, in 2022, there was a total of 225 975 active enterprises employing 1 253 197 persons.

Within the total number of active enterprises in 2022, the most represented were enterprises in the activities of Professional, scientific and technical activities (16.6%), Wholesale and retail trade; repair of motor vehicles and motorcycles (15.7%), Construction (12.6%) and Manufacturing (10.6%).

The largest shares in the total number of employed persons were recorded in Manufacturing (21.9%) and Wholesale and retail trade; repair of motor vehicles and motorcycles (19.7%).

Within the total number of enterprise births in 2022, the activities with the largest shares were Professional, scientific and technical activities (16.5%), Construction (15.3%) and Wholesale and retail trade; repair of motor vehicles and motorcycles (10.1%).

Compared to the previous year, 2021, enterprise births significantly increased in activities of Electricity, gas, steam and air conditioning supply (88.7%) due to the increasing number of enterprises engaged in the production of electricity from renewable sources and in Arts, entertainment and recreation (45.8%) within which the largest number of enterprises are related to sports and recreation.

The survival rates had no major deviations compared to previous periods.

Within the total number of enterprise deaths in 2021, the largest shares belonged to enterprises in Wholesale and retail trade; repair of motor vehicles and motorcycles (17.4%), Professional, scientific and technical activities (17.1%), and Construction (11.8%).

## 1 NUMBER OF ENTERPRISES, BY ACTIVITY STATUS

	2017	2018	2019 <sup>1)</sup>	2020	2021	2022 <sup>2)</sup>
Number of active enterprises	168 168	175 022	207 713	205 790	217 553	225 975
Number of enterprise births	14 792	16 667	26 192	19 281	23 942	26 069
Number of enterprise deaths	11 062	13 739	17 502	14 731	18 535 <sup>2)</sup>	...

1) Data from 2019 are not comparable with data from previous years due to the enlargement of the coverage of active enterprises.

2) Provisional data. Final data will be published in the database on 12 July 2024.

## 2 NUMBER OF ACTIVE ENTERPRISES AND NUMBER OF PERSONS EMPLOYED, ACCORDING TO NKD 2007

	2020		2021		2022 <sup>1)</sup>	
	Number of enterprises	Number of persons employed	Number of enterprises	Number of persons employed	Number of enterprises	Number of persons employed
Total	205 790	1 196 478	217 553	1 214 659	225 975	1 253 197
B Mining and quarrying	188	1 947	186	1 745	190	1 882
C Manufacturing	22 118	271 018	23 152	270 764	23 952	274 498
D Electricity, gas, steam and air conditioning supply	564	14 661	590	14 690	661	14 802
E Water supply; sewerage, waste management and remediation activities	850	31 616	817	31 005	830	31 003
F Construction	23 952	126 510	26 678	134 352	28 573	139 720
G Wholesale and retail trade; repair of motor vehicles and motorcycles	35 314	238 471	35 754	242 631	35 464	246 431
H Transportation and storage	12 841	90 102	13 228	74 275	13 447	76 605
I Accommodation and food service activities	20 687	99 459	21 101	107 023	21 353	115 605
J Information and communication	11 699	53 387	13 108	57 833	14 087	62 713
K Financial and insurance activities	1 365	35 594	1 597	38 519	1 668	38 108
L Real estate activities	5 171	11 258	5 754	11 625	6 201	12 584
M Professional, scientific and technical activities	33 366	85 965	35 780	89 425	37 428	92 987
N Administrative and support service activities	11 191	56 932	11 950	59 507	12 956	63 445
P Education	2 787	10 735	3 114	11 186	3 537	11 499
Q Human health and social work activities	6 612	26 725	6 817	27 973	6 817	27 957
R Arts, entertainment and recreation	3 187	15 090	3 431	15 155	3 723	15 970
S Other service activities (except S94)	13 898	27 008	14 496	26 951	15 088	27 388

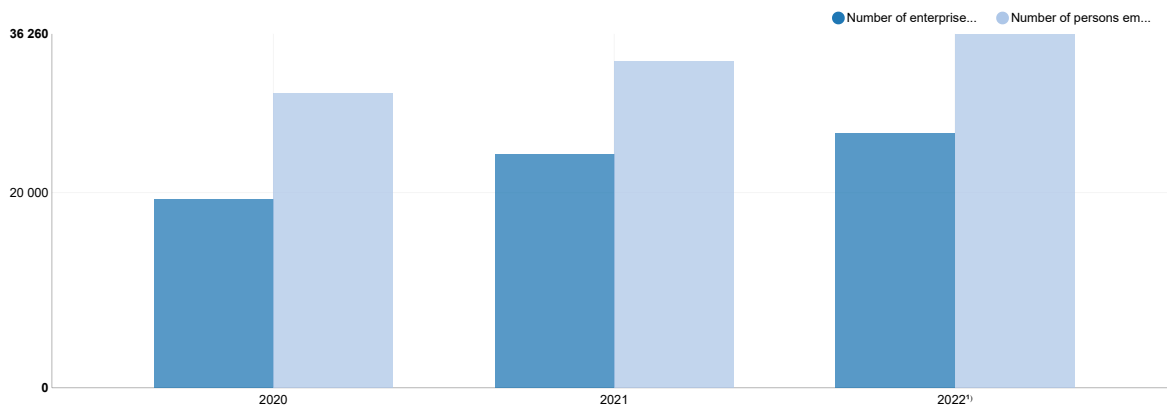
1) Provisional data. Final data will be published in the database on 12 July 2024.

## 3 NUMBER OF ENTERPRISE BIRTHS AND NUMBER OF PERSONS EMPLOYED, ACCORDING TO NKD 2007

	2020		2021		2022 <sup>1)</sup>	
	Number of enterprises	Number of persons employed	Number of enterprises	Number of persons employed	Number of enterprises	Number of persons employed
Total	19 281	30 179	23 942	33 406	26 069	36 260
B Mining and quarrying	8	18	7	7	11	11
C Manufacturing	1 540	2 665	2 105	3 121	2 118	3 465
D Electricity, gas, steam and air conditioning supply	55	60	71	83	134	181
E Water supply; sewerage, waste management and remediation activities	49	71	50	78	49	64
F Construction	2 816	5 548	3 788	5 606	3 992	5 822
G Wholesale and retail trade; repair of motor vehicles and motorcycles	2 435	3 599	2 761	3 858	2 626	3 673
H Transportation and storage	1 276	2 361	1 344	2 277	1 561	2 441
I Accommodation and food service activities	1 710	4 046	1 752	3 769	2 196	4 552
J Information and communication	1 693	2 036	2 330	2 712	2 230	2 756
K Financial and insurance activities	86	121	111	168	128	130
L Real estate activities	481	541	794	862	1 026	1 183
M Professional, scientific and technical activities	3 449	4 021	4 155	4 739	4 312	5 041
N Administrative and support service activities	1 235	1 809	1 574	2 099	2 186	2 668
P Education	423	494	516	597	697	734
Q Human health and social work activities	359	743	586	1 110	401	672
R Arts, entertainment and recreation	380	453	456	496	665	811
S Other service activities (except S94)	1 286	1 593	1 542	1 824	1 737	2 056

1) Provisional data. Final data will be published in the database on 12 July 2024.

## G-1 NUMBER OF ENTERPRISE BIRTHS AND NUMBER OF PERSONS EMPLOYED, 2020 – 2022



1) Provisional data. Final data on the number of enterprise births in 2022 will be published in the database on 12 July 2024.

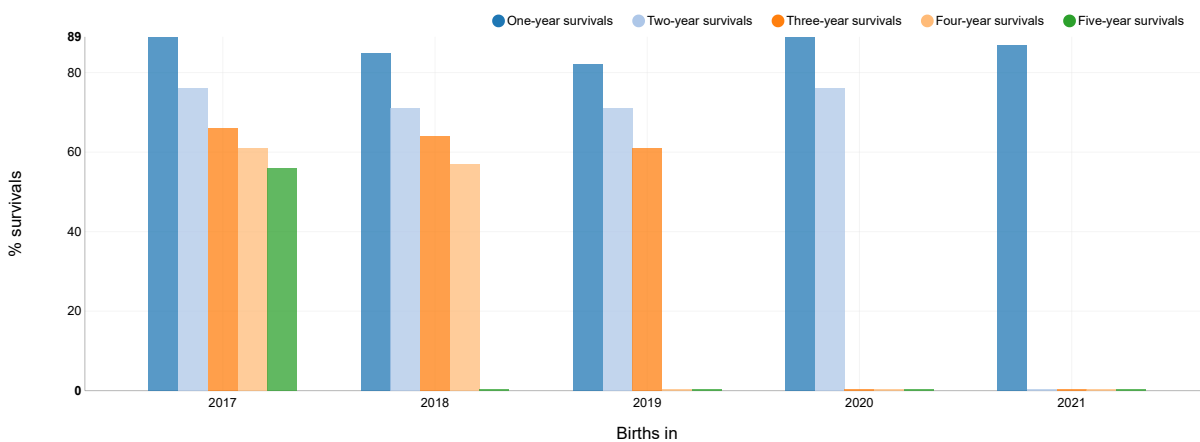
## 4 SURVIVAL RATE<sup>1)</sup> OF ENTERPRISES BORN FROM 2017 TO 2021

	Births in					%
	2017	2018	2019	2020	2021	
One-year survivals	89	85	82	89	87 <sup>2)</sup>	
Two-year survivals	76	71	71	76 <sup>2)</sup>	...	
Three-year survivals	66	64	61 <sup>2)</sup>	...	...	
Four-year survivals	61	57 <sup>2)</sup>	...	...	...	
Five-year survivals	56 <sup>2)</sup>	...	...	...	...	

1) Survival rate represents the percentage of enterprises that were constantly active after the year of birth.

2) Provisional data. Final data will be published in the database on 12 July 2024.

## G-2 SURVIVAL RATE<sup>1)</sup> OF ENTERPRISES BORN FROM 2017 TO 2021



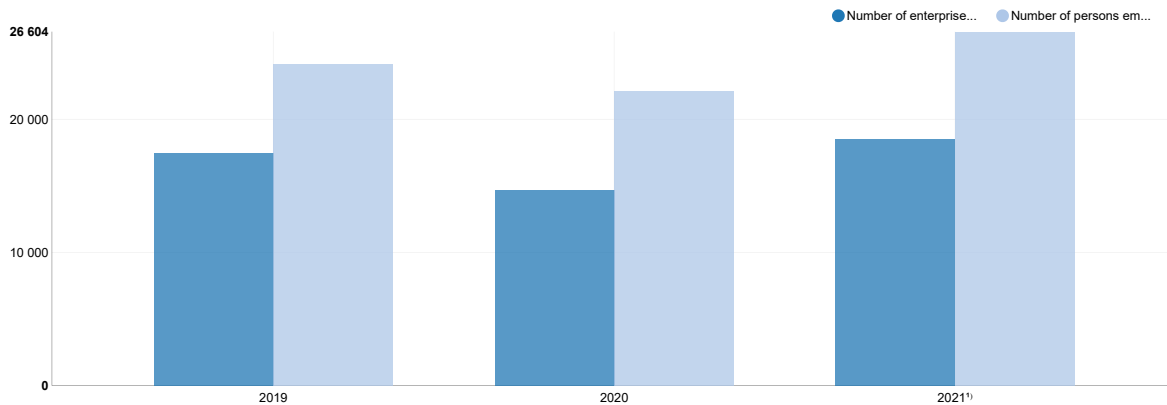
1) Survival rate represents the percentage of enterprises that were constantly active after the year of birth.

## 5 NUMBER OF ENTERPRISE DEATHS AND NUMBER OF PERSONS EMPLOYED, ACCORDING TO NKD 2007

	2019		2020		2021 <sup>1)</sup>	
	Number of enterprises	Number of persons employed	Number of enterprises	Number of persons employed	Number of enterprises	Number of persons employed
Total	17 502	24 199	14 731	22 160	18 535	26 604
B Mining and quarrying	15	21	7	8	14	15
C Manufacturing	1 521	2 254	1 277	1 912	1 572	2 842
D Electricity, gas, steam and air conditioning supply	70	96	39	46	112	211
E Water supply; sewerage, waste management and remediation activities	35	42	42	53	53	65
F Construction	1 617	2 412	1 501	2 666	2 188	3 149
G Wholesale and retail trade; repair of motor vehicles and motorcycles	3 453	4 644	2 448	3 437	3 218	5 292
H Transportation and storage	1 422	2 000	1 044	1 940	969	1 647
I Accommodation and food service activities	2 684	4 731	1 709	3 482	1 921	3 028
J Information and communication	911	1 017	1 054	1 141	1 269	1 510
K Financial and insurance activities	81	96	88	101	119	135
L Real estate activities	628	653	404	456	1 347	1 402
M Professional, scientific and technical activities	2 109	2 382	2 201	2 593	3 170	3 539
N Administrative and support service activities	1 423	1 867	1 076	1 539	1 144	2 038
P Education	171	216	228	285	297	334
Q Human health and social work activities	100	148	442	978	108	144
R Arts, entertainment and recreation	278	317	327	378	333	370
S Other service activities (except S94)	984	1 303	844	1 145	701	883

1) Provisional data. Final data will be published in the database on 12 July 2024.

### G-3 NUMBER OF ENTERPRISE DEATHS AND NUMBER OF PERSONS EMPLOYED, 2019 – 2021



1) Provisional data. Final data on the number of enterprise deaths in 2021 will be published in the database on 12 July 2024.

## NOTES ON METHODOLOGY

Business demography data are prepared in line with the methodology developed by Eurostat and OECD. Since the reference year 2021, methodological standards have been applied in accordance with Regulation (EU) No. 2019/2152 of the European Parliament and of the Council of 27 November 2019 on European business statistics, repealing 10 legal acts in the field of business statistics, which extends the coverage to the entire section K – Financial and insurance activities, and excludes division S94 – Activities of membership organisations.

### Data sources

Business demography statistics is based on data from the Statistical Business Register (SBR) of the Croatian Bureau of Statistics.

### Observation units

The main observation unit used for business demography statistics is an enterprise. Each enterprise as a whole is assigned a code number of its principal activity according to the National Classification of Activities. The principal activity is determined and updated by the Statistical Business Register. The criterion for determining the principal activity is the largest share in the total value added of an enterprise. If it is not possible to obtain accurate information on the value added, substitute criteria, such as income and/or

the number of persons employed, are applied. For enterprises classified in section K – Financial and insurance activities, the observation units are still legal and natural persons that are used as substitutes for enterprises.

#### Coverage

Business demography data refer to enterprises registered in the SBR that are classified in sections B – S according to the NKD 2007, with the exception of section O – Public administration and defence; compulsory social security and division S94 – Activities of membership organisations.

#### Definitions and explanations

**Enterprise** in the statistical sense is a business entity that represents an organisational unit for producing goods and/or services and benefits from a certain degree of autonomy. Depending on the business and organisational situation, it may correspond to only one legal unit or a group of several legal units. In addition to legal entities, enterprises also include free lances and crafts (since 2019, also those whose activity has been determined on the basis of lump sum income tax reports). [Council Regulation \(EEC\) No. 696/93 on the statistical units for the observation and analysis of the production system in the Community](#) is fully implemented, and enterprises become the central observation unit in business demography. Until the 2019 reference year, legal entities and natural persons were treated as proxies for enterprises, while the use of the common EU definition of enterprises will ensure a clear distinction between these terms.

**Number of active enterprises** is the number of enterprises registered in the Statistical Business Register that were active during at least a part of the reference year.

Enterprise is considered to be active if it either had employment or realised turnover or investments.

**Number of persons employed (Number of employees and self-employed persons)** is defined as the total number of persons who work in an enterprise (including working proprietors, partners working regularly in the unit, unpaid family workers and voluntary workers), as well as persons who work outside the enterprise who belong to it and are paid by it, calculated as an annual average.

**Enterprise births** include enterprises that started an economic activity in the reference year.

Births exclude events such as mergers, break-ups, split-offs or restructuring of a set of enterprises.

Enterprise birth is not equal to the registration of an enterprise in a competent register. It is the result of the comparison and analysis of populations of active enterprises in three consecutive years.

**Enterprise deaths** include enterprises that have not been economically active for two consecutive years after the last year of activity. Deaths exclude enterprises that ceased to operate due to a split-up, take-over or merger.

**Survived enterprise** is the one without discontinuity in its activity status in years after the year of birth.

**Survival rate of newly born enterprises** in a given reference period is the number of enterprises that were born in year xx-n and survived to year xx as a percentage of all enterprises born in year xx-n.

#### Territorial constitution

Population covers enterprises resident in the Republic of Croatia.

#### Abbreviations

EEC	European Economic Community
EU	European Union
Eurostat	Statistical Office of the European Communities
OECD	Organisation for Economic Co-operation and Development

#### Symbols

... data not available

#### Published by the Croatian Bureau of Statistics, Zagreb, Ilica 3, P. O. B. 80

Phone: (+385 1) 48 06 111  
Press corner: [press@dzs.hr](mailto:press@dzs.hr)

Persons responsible:  
Milenka Primorac Čačić, Director of Business Statistics Directorate  
Lidija Brković, Director General

Prepared by:  
Zrinka Pavlović and Ana Veleđar

#### USERS ARE KINDLY REQUESTED TO STATE THE SOURCE.

Customer Relations and Data Protection Department

Information and user requests  
Phone: (+385 1) 48 06 138, 48 06 154  
E-mail: [stat.info@dzs.hr](mailto:stat.info@dzs.hr)

Subscription  
Phone: (+385 1) 48 06 115  
E-mail: [prodaja@dzs.hr](mailto:prodaja@dzs.hr)